



## Pop Sells

5717 Bessie Drive  
Sarasota, Florida 34233



**Contact Steve Sotelo**  
(903) 818-3104  
steveso@popsells.com

# 1967 MCI GMC Bus 40

Stock # 248160



## 26,000.00 CAD

<b>Year</b>	1967
<b>Type</b>	Motorhome
<b>Brand</b>	MCI
<b>Manufactured By</b>	MCI
<b>Category</b>	Bus Conversion
<b>Model</b>	GMC Bus 40
<b>Length</b>	40' 0"
<b>Miles</b>	186,000
<b>Location</b>	Grovedale, Alberta
<b>Storage Status</b>	Not currently in storage

## 1967 GMC Bus Conversion by MCI in Good Condition and Runs Great! 8V 71 Detroit Diesel Engine! Approx 14 MPG! Large Kitchen Counter Area! Sleeps 6!

This is a very rare 1967 MCI GMC Bus that's been converted. It's got everything you'll need for a trip and plenty of storage space.

It's a nice conversion with an 8V71 Detroit Diesel engine. Allison auto transmission. There's been a lot of upgrades done to the inside.

This Bus conversion has everything you'll need for your camping trip or extended stay. There's a full kitchen, sleeping areas, toilet, shower and much more.

The coach is in good shape and runs great, according to the seller. There's a King size bed and lots of space inside.

There's a 300-gallon water tank and the same for the sewer ...

Read the entire description on the website by scanning the QR code below.



Information generated on Jul 16, 2025 10:56 PM  
Please view this listing online for up-to-date information:  
<https://www.popsells.com/view/248160>



**Pop Sells**  
5717 Bessie Drive  
Sarasota, Florida 34233



**Contact Steve Sotelo**  
(903) 818-3104  
steveso@popsells.com

# 1967 MCI GMC Bus 40

Stock # 248160

## Details and Specifications

### Engine & Mechanical

Engine Brand	Detroit Diesel	Engine Model	8V71	Miles	186,000
Fuel Type	Diesel	Transmission	Automatic	# of Axles	1
Age of tires	60 mos.				

### Dimensions & Specifications

Length	40'	Width	8'	Height	10' 10"
--------	-----	-------	----	--------	---------

### Accommodations & Passengers

Person Capacity	6	Sleep Capacity	6	# of Sleeping Areas	1
Bunk Beds	No	Water Capacity	300 gals	Waste Capacity	300 gals
Has Generator	Yes 5500 Honda powerplant	# of Slides	0	Has Air Conditioning	Yes



Information generated on Jul 16, 2025 10:56 PM  
Please view this listing online for up-to-date information:  
<https://www.popsells.com/view/248160>



**Pop Sells**  
5717 Bessie Drive  
Sarasota, Florida 34233



**Contact Steve Sotelo**  
(903) 818-3104  
steveso@popsells.com

# 1967 MCI GMC Bus 40

Stock # 248160

## Construction Features

<b>Body Material</b>	Aluminum with Steel Frame	<b>Exterior Color</b>	Maroon/silver	<b>Interior Color</b>	Interior Wood Finish
<b>Chassis</b>	GMC				

## Living Areas

<b># of Full Bathrooms</b>	1	<b>Non-Smoking</b>	Yes	<b>Pet-Free</b>	Yes
<b>Has King Bed</b>	Yes				

## Outdoor Areas

<b># of Side Doors</b>	1
------------------------	---

## Features

### Dining Features

- Cabinets
- Double Kitchen Sink
- Microwave
- Oven
- Refrigerator/freezer
- Stove
- Dinette



Information generated on Jul 16, 2025 10:56 PM  
Please view this listing online for up-to-date information:  
<https://www.popsells.com/view/248160>



**Pop Sells**  
5717 Bessie Drive  
Sarasota, Florida 34233



**Contact Steve Sotelo**  
(903) 818-3104  
steveso@popsells.com

# 1967 MCI GMC Bus 40

Stock # 248160

## Living Features

- Carpet
- Recliner
- Air Conditioning
- Bathroom Sink
- Bed - King
- Flooring
- Shower
- Storage
- Toilet
- Sofa Sleeper

## Mechanical Systems

- Generator
- 110 Outlets

## Outside Features

- Propane Tanks



Information generated on Jul 16, 2025 10:56 PM  
Please view this listing online for up-to-date information:  
<https://www.popsells.com/view/248160>

**Pop**

**Pop Sells**

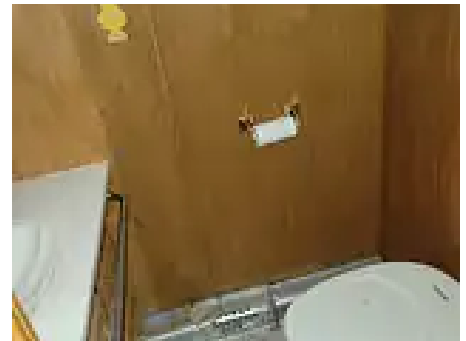
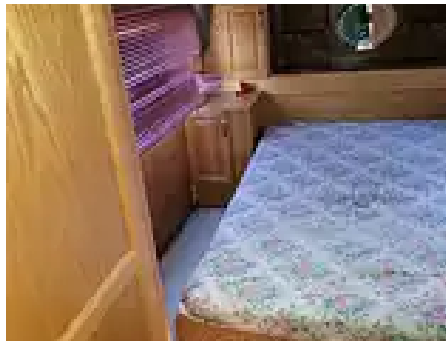
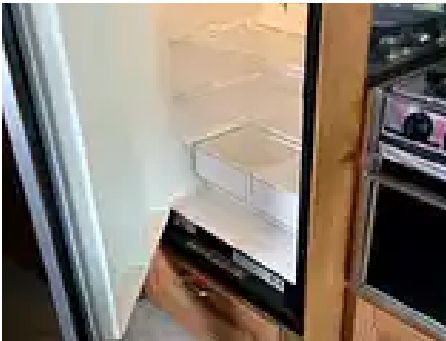
5717 Bessie Drive  
Sarasota, Florida 34233



**Contact Steve Sotelo**  
(903) 818-3104  
steveso@popsells.com

# 1967 MCI GMC Bus 40

Stock # 248160



**Scan the QR code or click the link in the footer to view more photos.**

This information was provided to Pop Sells, LLC by the Seller and is believed to be accurate at the time of publication. We recommend an inspection by a qualified professional to ascertain the overall condition and function of structure and mechanical components.



Information generated on Jul 16, 2025 10:56 PM  
Please view this listing online for up-to-date information:  
<https://www.popsells.com/view/248160>