



**Pop Sells**  
5717 Bessie Drive  
Sarasota, Florida 34233

**Pop**  
**Contact Pop**  
(941) 257-0111

# 2013 Sea Ray 210 SLX

Stock # 157122



\$38,900

Year	2013
Type	Power
Brand	Sea Ray
Category	Bowriders
Model	210 SLX
Length (LOA)	21' 0"
Hours	100
Location	Greenwood Village, Colorado
Closest Major City	Highlands Ranch, CO
Storage Status	Not currently in storage

## Very nice 2013 Sea Ray SLX 210 with very low hours!

This 2013 Sea Ray 210 SLX is said to be in very nice condition. This is a 100% freshwater boat that is slipped on a Reservoir just outside of Denver. This Sea Ray has very little hours on it. The owners bought it hoping that they would be able to use it much more than they are able to. They don't want it just sitting not being used. This 210 SLX has all of the usual Sea Ray features: Mercruiser 4.3 MPI engine with the Alpha One outdrive, Bimini top, seating for 10, Storage, Stereo, Full gauge package, In deck ski locker, Swim platform with swim ladder to just name a few.

Read the entire description on the website by scanning the QR code below.



Information generated on Jan 16, 2024 11:46 PM  
Please view this listing online for up-to-date information:  
<https://www.popsells.com/view/157122>



# 2013 Sea Ray 210 SLX

Stock # 157122

## Details and Specifications

### Engine & Mechanical

# of Engines	1	Engine Year	2013	Engine Brand	Mercury
Engine Model	4.3 MPI	Engine Hours	100	Engine Size	220 hp
Fuel Type	Gasoline	Fuel Capacity	40 gals	Propeller Material	Aluminum
Max Speed	42 mph	Cruising Speed	25 mph	Drive Brand	Mercury
Drive Model	Alpha One	Drive Type	Stern Drive	Configuration	Inboard/Outboard

### Dimensions & Specifications

Length (LOA)	21'	Beam	8' 2"	Minimum Draft	1' 10"
Maximum Draft	3' 1"	Dry Weight	3,642 lbs		





# 2013 Sea Ray 210 SLX

Stock # 157122

## Trailer Details

Included	Yes	Trailer Year	2013	Trailer Brand	Shoreland'r
Trailer Material	Steel	# Axles	2	# Brakes	2
Brake Type	Surge	Breakaway Hitch	No		

## Accommodations & Passengers

Passenger Capacity	10	Has Generator	No	Has Air Conditioning	No
Non-Smoking	Yes	Pet-Free	Yes		

## Construction Features

Hull Material	Fiberglass	Exterior Color	Navy Blue/white	Interior Color	Two Tone Tan
---------------	------------	----------------	-----------------	----------------	--------------

## Features

### Accommodations

- Carpet-snap In





# 2013 Sea Ray 210 SLX

Stock # 157122

## Construction Features

- Gel Coat

## Deck Gear

- |                           |                  |                          |                                    |
|---------------------------|------------------|--------------------------|------------------------------------|
| • Walk Through Windshield | • Bench Seat     | • Beverage Holders       | • Bimini                           |
| • Bow Cover               | • Cockpit Carpet | • Cockpit Cover          | • Cockpit Seating                  |
| • Compartment Storage     | • Glove Box      | • In-deck Ski Locker     | • Passenger Seat                   |
| • Rub Rails               | • Ski Tow Eyes   | • Steering Wheel         | • Sun Pad                          |
| • Swim Ladder             | • Swim Platform  | • Transom - Walk Through | • Types Of Cleats: Stainless Steel |
| • Bolster Seat: 2         |                  |                          |                                    |

## Electrical Systems

- |              |                    |                          |                         |
|--------------|--------------------|--------------------------|-------------------------|
| • Alternator | • Cockpit Lighting | • Engine Kill Switch     | • Fuel Gauge            |
| • Horn       | • Hour Meter       | • Oil Pressure Gauge     | • Ship's Power (12v DC) |
| • Speakers   | • Speedometer      | • Stereo                 | • Tach                  |
| • Volt Meter | • Water Temp Gauge | • Number Of Batteries: 1 |                         |





# 2013 Sea Ray 210 SLX

Stock # 157122

## Mechanical Systems

- Power Tilt & Trim
- Throttle/shift
- Composite Construction: Fiberglass
- Bilge Blower
- Trim Indicator
- Starting Type: Electric
- Bilge Pump
- Type Of Cooling System: Raw Water
- Number Of Eng Cylinders: 6
- Fuel Injected
- Type Of Steering System: Power
- Number Of Fuel Tanks: 1

## Navigational Equipment

- Navigation Lights

## Safety Equipment

- Grab Rails



**Pop**

**Pop Sells**

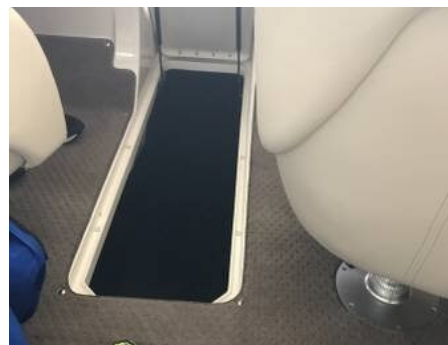
5717 Bessie Drive  
Sarasota, Florida 34233

**Pop**

**Contact Pop**  
(941) 257-0111

# 2013 Sea Ray 210 SLX

Stock # 157122



**Scan the QR code or click the link in the footer to view more photos.**

This information was provided to Pop Sells, LLC by the Seller and is believed to be accurate at the time of publication. We recommend an inspection by a qualified professional to ascertain the overall condition and function of structure and mechanical components.



Information generated on Jan 16, 2024 11:46 PM  
Please view this listing online for up-to-date information:  
<https://www.popsells.com/view/157122>